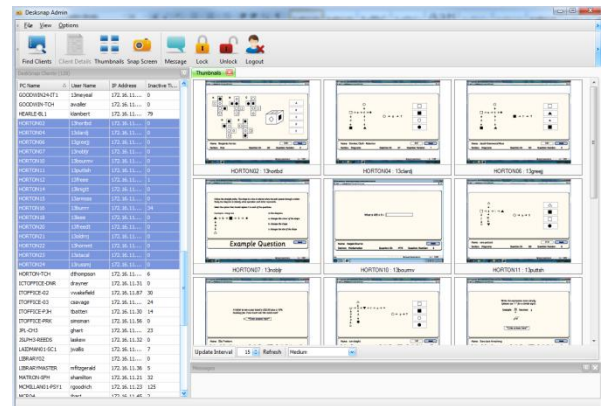


Monitor User Activity – Live!

DMS NetMonitor is a cost effective way of monitoring pupil workstations and ensuring your Acceptable Use Policy is being followed.

It allows you to control their use of applications, provide remote assistance and will silently monitor pupil activity to reduce cyber bullying.



Download a **FREE 30 Day Trial** of NetMonitor – Please read the documentation before installation.

Features:

Monitor Screens

Follow the activity of each of your users by seeing on your screen what they are doing on theirs.

View Thumbnails on Screen

Your screen displays a thumbnail size image of each of your students' screens which you can select to enlarge.

The screens are arranged in the same format as the classroom layout for ease of reference.

Launch Applications

Either individually, or en masse, launch an application such as a web browser and load a document or URL.

Application Blocks

Set up blocks for individuals or groups to prevent access to selected applications.

Inactive Time-out

You can use DMS NetMonitor to set an idle time allowance on one or more workstations. After this time, the workstation will automatically log the user out. This is a handy security feature and saves energy too.

Enforce Single Log In

If a user is logged in at one workstation and their ID is used to attempt to log in at another, DMS NetMonitor will display a warning on both workstations, identifying the other's location and providing the option to choose which session to close.

The user may simply have forgotten to log out from a previous session and can close it from their new location before continuing to log in. However, the second log in could be a case of attempted identity theft. The user at the original location will have a 30 second window to prevent the second log in before the option message is displayed at the second location.

Broadcast Messages

Use DMS NetMonitor to send messages across all screens. Ideal if you want to communicate to several locations at the same time, or for notes to selected students which are not relevant to the rest of the class.

Lock Keyboard, Mouse and Screen

To ensure the attention of selected students is not distracted, when you want to make a point, you can disable the keyboard and mouse and blank the screen.

Students may use their Own PCs

If students bring their own PCs into class, DMS NetMonitor may be used to monitor these too. There is no need to install software on the PCs, the student just need to run the client application from the network. When they shutdown or log out the client vanishes.

Coming Soon:

View by Application

This option allows you to view each student location and a full list of the applications they are running, not just the one currently maximised on the screen.

Exempt User Option

a "Trusted" status may be assigned where staff PCs are being monitored. This displays a blank screen if selected applications are in use (eg sensitive financial or personal data).

Cyber-Bullying Prevention Aid

DMS NetMonitor monitors users' keystrokes and will snap screens when pre-registered words or phrases are entered. This can help to track students committing an act of bullying over the network or internet, or planning an act with others. Because DMS NetMonitor tracks the keystrokes, it picks up the offending keywords or phrases regardless of the application being used, so private hotmail messages are not exempt.